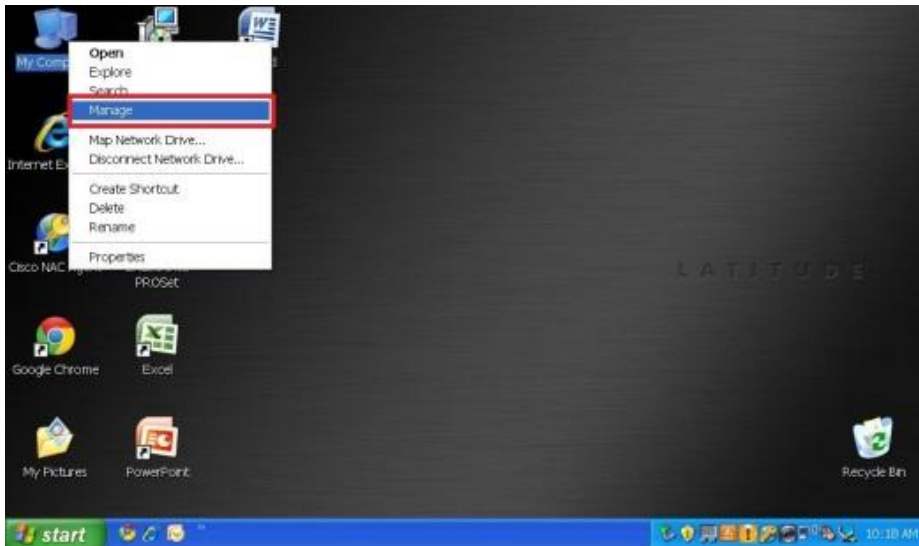
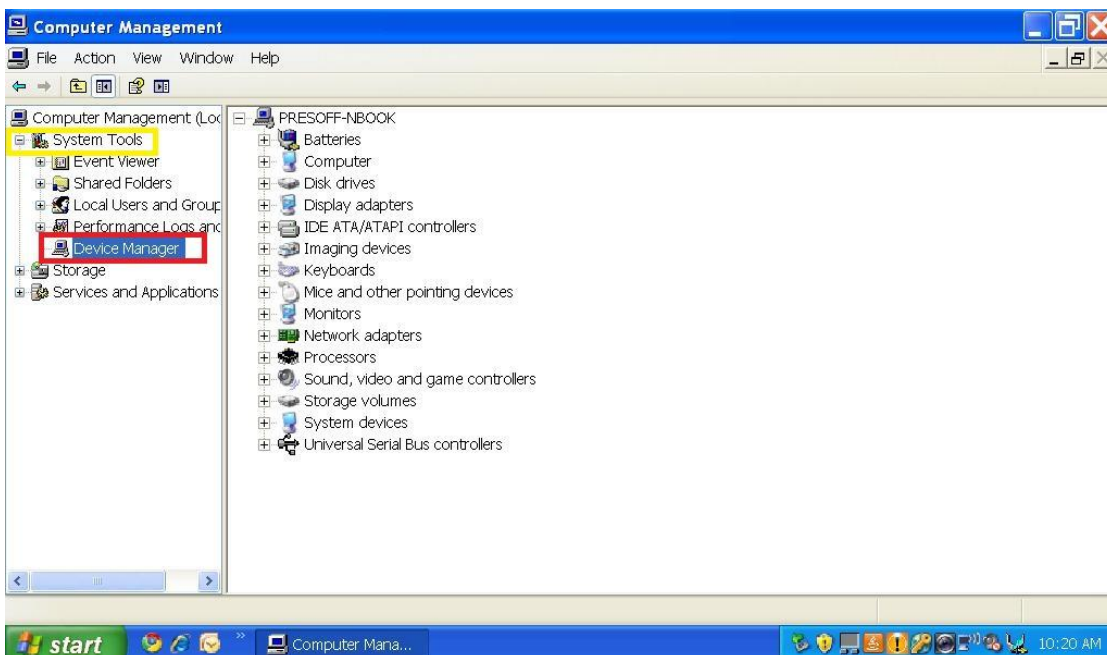


**THIS GUIDE WILL LEAD YOU THROUGH HOW TO UPDATE THE DRIVERS OF YOUR WIRELESS (WIFI) ADAPTER ON YOUR WINDOWS XP COMPUTER. TO COMPLETE THIS PROCESS, YOU MUST BE LOGGED IN AS AN ADMINISTRATOR AND HAVE A WORKING CONNECTION TO THE INTERNET. THIS PROCESS SHOULD TAKE 5-10 MINUTES TO COMPLETE.**

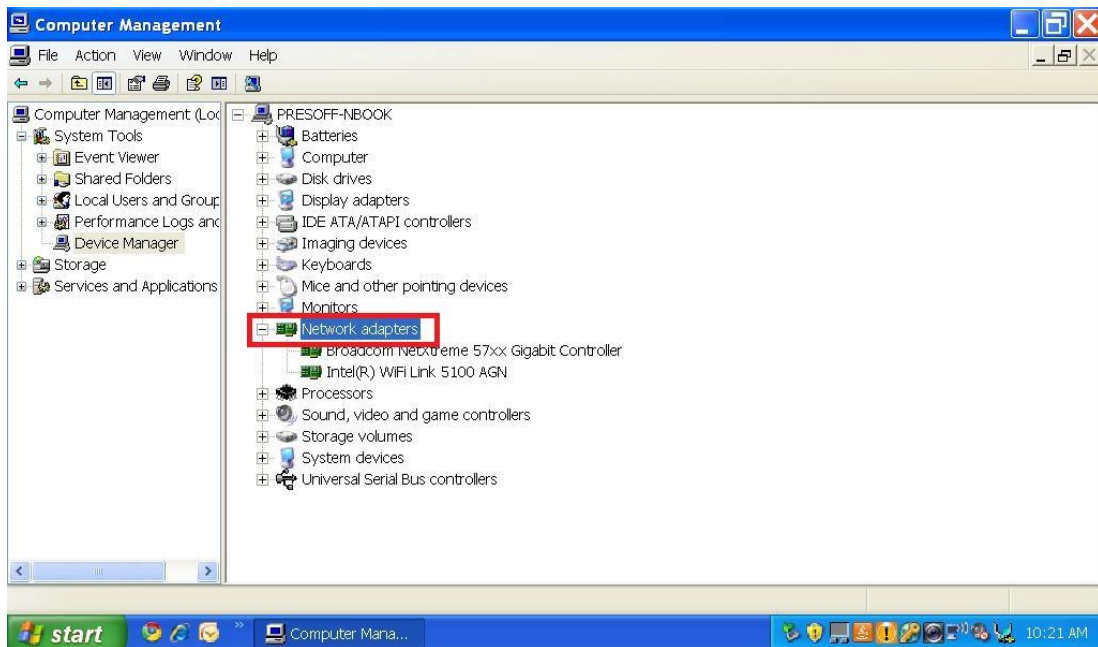
1. Begin by right clicking on **My Computer** located on your desktop and selecting **Manage.**” *If My Computer is not on your desktop, click on Start and look for it on the right column.*



2. Under the **System Tools** dropdown, select **Device Manager.**



3. Click the + sign to expand the list for **Network Adapters**.



4. Different models of computers vary between network devices. You may have two or more devices that appear under **Network Adapters**. You are looking for the **wireless adapter** to update, **NOT the Ethernet adapter**. Your wireless card may contain the following keywords (but not limited to):

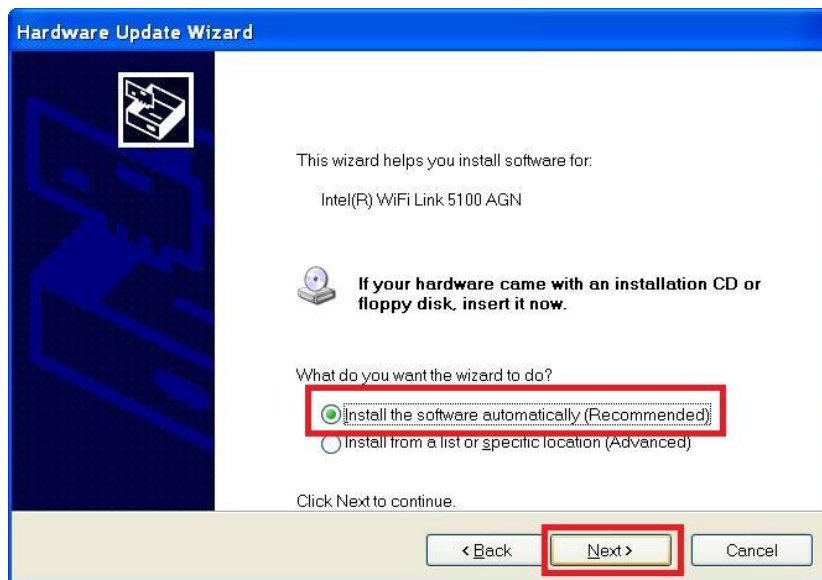
- WLAN
- WiFi
- Wireless

In our example in Figure 3, the wireless adapter is named “Intel® WiFi Link 5100 AGN.” Find the wireless adapter relevant to your computer, Right-Click on it, and select “**Update Driver...**”

5. A hardware update wizard will appear. Select **“Yes, this time only”** and press **next**.



6. Select **“Install the software automatically”** and press next. Windows will now search for driver updates. If updates are found, they should install automatically, or prompt you to follow the installer for the adapter.



If no updates are found, you may also visit the network adapter or computer manufacturers' webpage to search for updates manually.

***NOTE: Not all wireless adapters will have updates available. Windows may prompt you saying that the drivers are already up to date.***