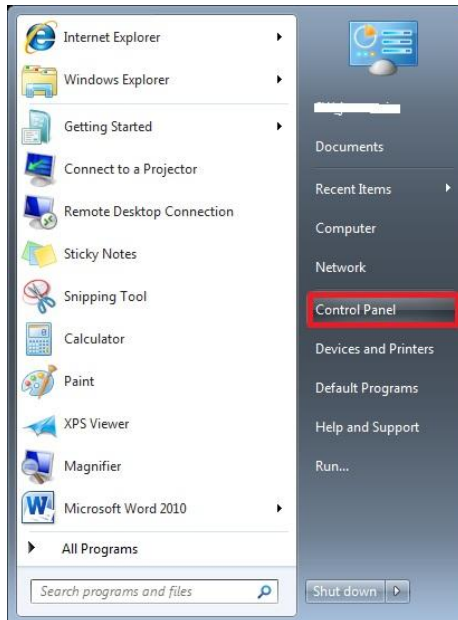


THIS GUIDE WILL LEAD YOU THROUGH HOW TO UPDATE THE DRIVERS OF YOUR WIRELESS (WIFI) ADAPTER ON YOUR WINDOWS 7 / VISTA COMPUTER. TO COMPLETE THIS PROCESS, YOU MUST BE LOGGED IN AS AN ADMINISTRATOR AND HAVE A WORKING CONNECTION TO THE INTERNET. THIS PROCESS SHOULD TAKE 5-10 MINUTES TO COMPLETE.

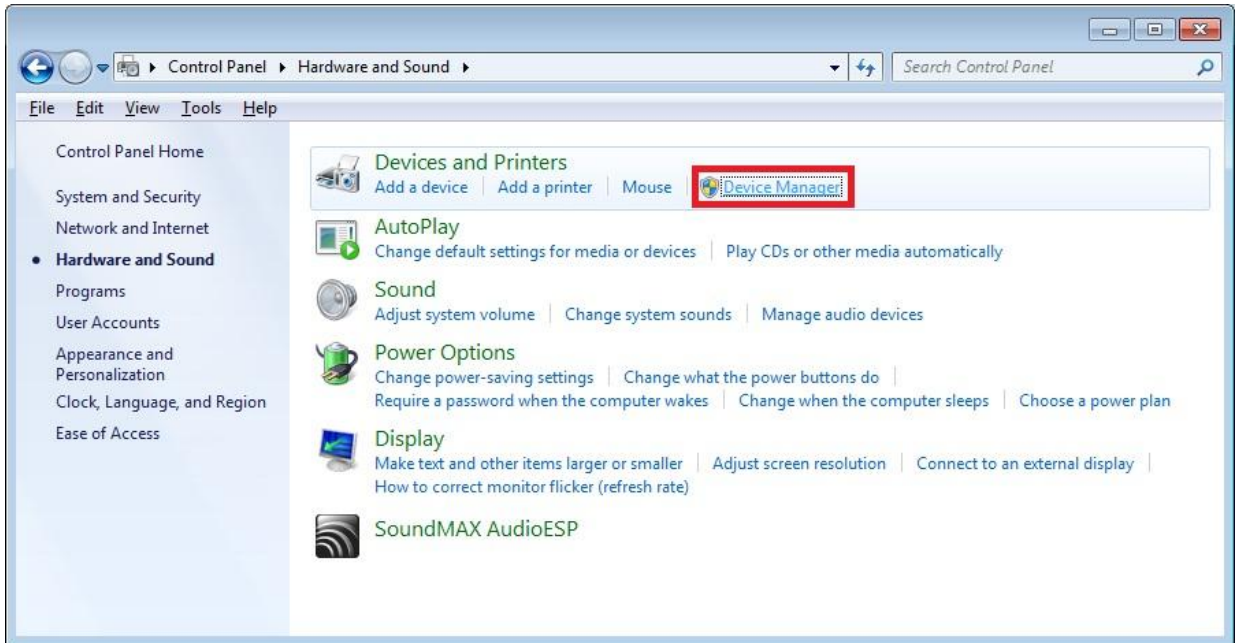
1. Begin by clicking **Start** and selecting **Control Panel**.



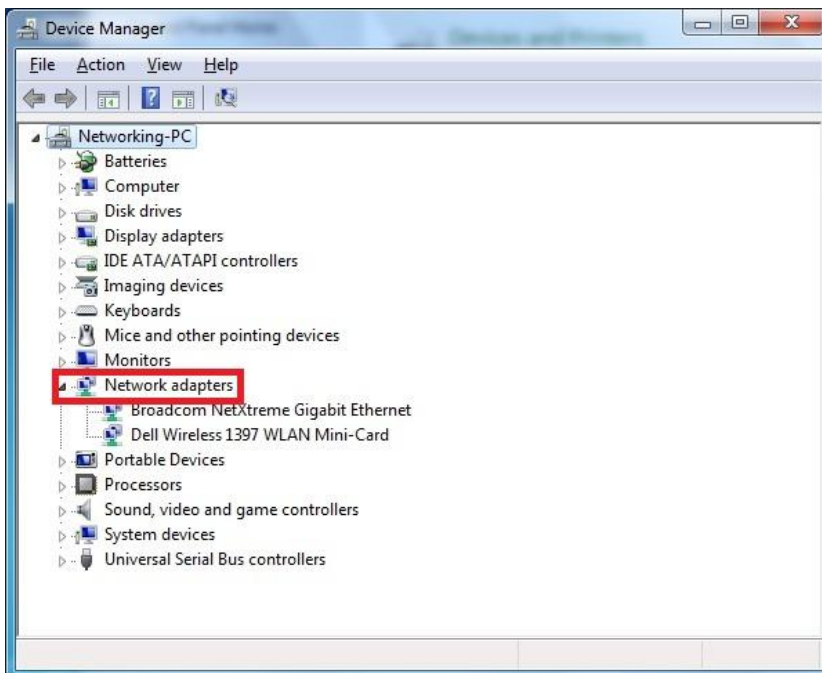
2. Click on **Hardware and Sound**.



3. Click on **Device Manager**. *User Account Control may prompt you to continue. If it does, just click Yes/OK.*



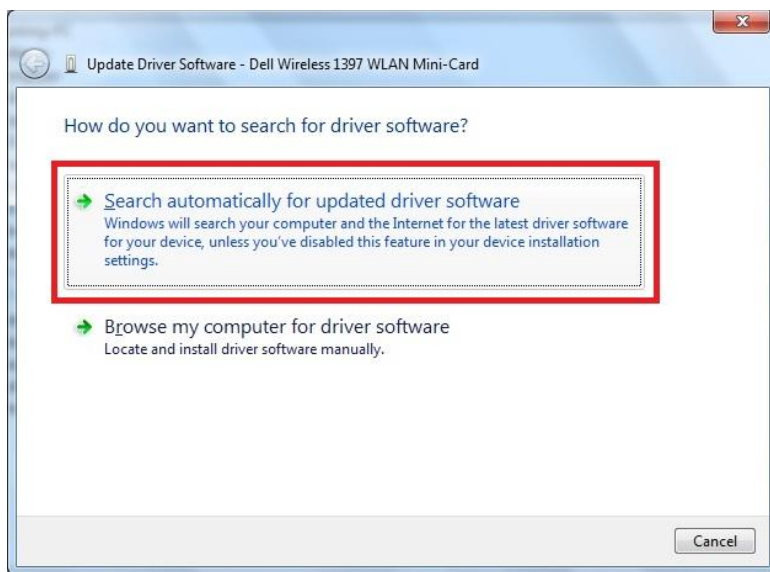
4. Click the arrow next to **Network Adapters**.



5. Different models of computers vary between network devices. You may have two or more devices that appear under **Network Adapters**. You are looking for the **wireless adapter** to update, **NOT the Ethernet adapter**. Your wireless card may contain the following keywords (but not limited to):

- WLAN
- WiFi
- Wireless

In our example in Figure 4, the wireless adapter is named “Dell Wireless 1397 WLAN Mini-Card”. Find the adapter relevant to your computer, Right-Click on it, and select “**Update Driver Software.**”



6. Windows will now search online for new drivers. If there is a new version of drivers available, Windows will download and install them automatically. You may or may not have to restart your computer after these updates have finished installing.
7. You're done! The wireless adapter is now up to date.

NOTE: Not all wireless adapters will have updates available. Windows may prompt you saying that the drivers are already up to date.